

PIN CABLE COILER

RV500



For coiling flexible cables



This machine, called a pin rewinder, has been designed to rewind flexible pipes and cables into coils. It can be connected in line with SAMEC cutting and stripping or cutting machines, and with an auxiliary encoder and external sensor it is also able to work with non-SAMEC machines.

The operator then operates the pedal to give the command for the next working cycle.

Precise electronic adjustment of the motor makes it possible to adjust the rewinding speed automatically to the working speed of the cutting-stripping machines, achieving excellent results for the rewind coils.

The pin rewinder has a connector for easy connection with SAMEC machines.

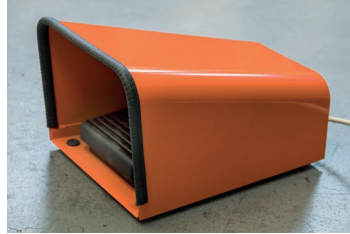
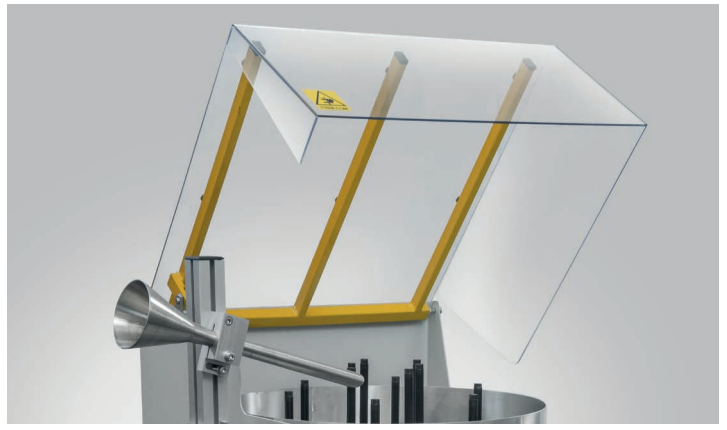
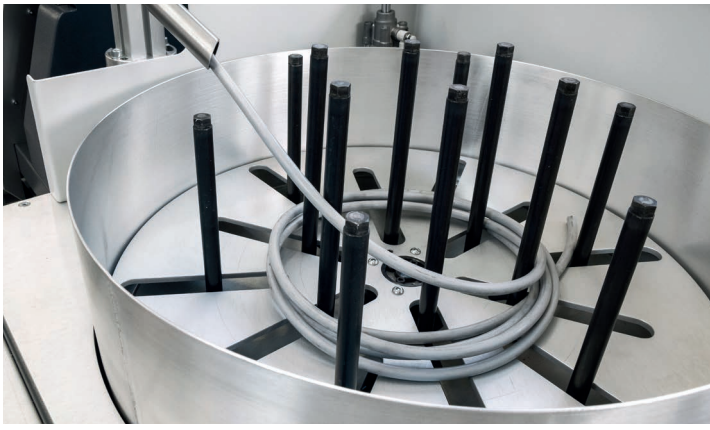
It is easy to adapt the machine to different processing needs by means of a small number of simple electrical controls and mechanical adjustments.

This machine has been built using methods and materials that will guarantee a long working life.

The electronics have been designed and made for maximum functionality and reliability, using components chosen for their great ease of integration.

The pneumatic components are of high quality and are easy to obtain in all European countries. A touch screen display used to determine permitted operating modes and settings. The operator is able to observe machine status at any time, set and correct process parameters and receive diagnostic information.

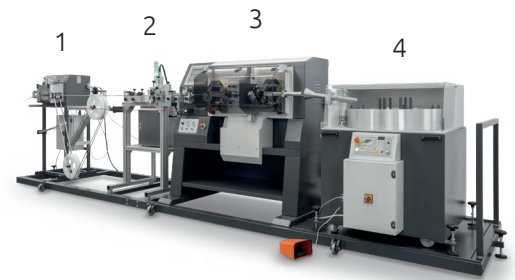




Some details

TECHNICAL SPECIFICATIONS

| | |
|-------------------------|--------------------------------------|
| Data setup | 7" touch screen display |
| Storable codes | max. 300 |
| Rewinding length | related to the cable dia. |
| Rewinding cable dia. | depends on the flexibility max 20 mm |
| Reel internal dia. | min. 140 mm |
| Reel external dia. | max. 500 mm |
| Rewinding speed | max. 2,5 mt/sec. |
| Power supply-absorption | 230V 50/60 Hz - 6A |
| Air supply | 6 bar continuous |
| Overall dimensions | 1000 x 500 x H1100 mm |
| Weight | Kg. 180 |



Inline assembly example:

1. Prefeeder
2. Inkjet marker
3. Cut, strip & unjacket machine
4. Coiler

ACCESSORIES INCLUDED:

The machine is delivered with the following accessories:
 - 1 connecting cable to the SAMEC machine
 - 1 cone cable guide, diameter = 21 mm

ACCESSORIES AVAILABLE UPON REQUEST:

- Cone cable guides for thin cables
 - Encoder group with external sensors to connect inline with non-SAMEC machines.

SAMEC MACCHINE reserves the right to modify its product contents and technical data without prior notice. This document is property of SAMEC MACCHINE in Vicenza, Italy.

Italian Technology Quality